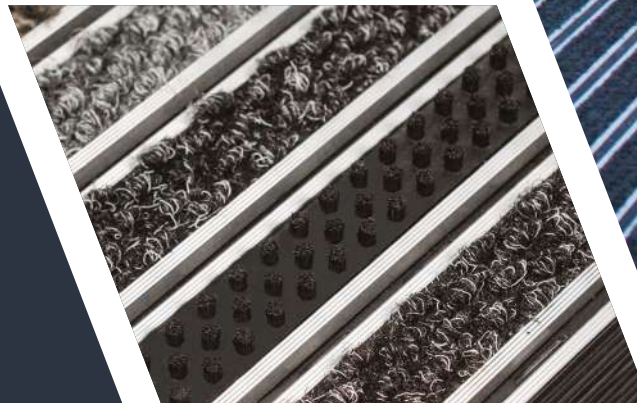


# COBA

flooring



## COBA Flooring Product Brochure

Uniclass L5367-P71	EPIC E482-X71
CI/SIB (71.3) Tn6	



[www.cobaflooring.com](http://www.cobaflooring.com)

## Introduction

COBA Flooring is the specialist commercial flooring arm of COBA Europe Ltd, dedicated to meeting the demands of our expanding entrance matting and floor covering business.

### Our History

COBA has been providing effective, and innovative, matting and flooring solutions for over 40 years. COBA Flooring was born out of an increased demand for our entrance matting range.

### Our Passion

Entrance matting should never be an after-thought. We feel passionately that if the right floor matting is specified first time, the benefits can be felt further down the line – from initial cost savings through to reduced cleaning and replacement expense.

### Our Offering

Our BIM-ready product range offers an option for every budget and situation. It broadly spans interlocking entrance tiles (available ex-stock), custom made aluminium entrance systems (manufactured in the UK), as well as a selection of floor covering solutions.

### Partnership

We partner our clients to offer support throughout each phase of the specification and purchase process, through to the installation and beyond. These include architects, specifiers, quantity surveyors, interior designers, flooring contractors and facilities managers.

### One Stop Service

From specification through to bespoke manufacture and installation, we can support the process every step of the way. From our state-of-the-art facility in Warwickshire, we design and manufacture many of our products here in the UK.

### Our Environmental Commitment

COBA Europe holds ISO 14001:2015 certification in recognition of our Environmental Management System. Wherever possible, we use recycled materials and look to eliminate both landfill and energy wastage.

The National Forest is a local organisation and one we have donated to since 2015. 2020 marks a relaunch of our Forest Floor Initiative, part of which sees COBA become official CSR partner to the charity.



# How to Specify Entrance Matting

This brief guide is intended to assist you in making the right choice of entrance matting first time around. Our Support Team is also on hand to answer any queries and arrange site surveys for the most accurate product specifications.

Look out for the icons throughout the brochure, to help you find the best suited products for your environment. For more information on specification check out our free **Guide to Specification** at [www.cobaflooring.com](http://www.cobaflooring.com)

## Zones

We recommend a zoning system when choosing your entrance matting. Whether your entrance extends outdoors or is fully covered, creating three zones delivers optimum dirt barrier performance, ensuring interior floors are kept clean and hazard free.



### Zone 1

Zone 1 is all about scraping and removing the initial 'surface' dirt, mud and moisture. The matting should have a more abrasive surface, or tough bristle, for scraping action.



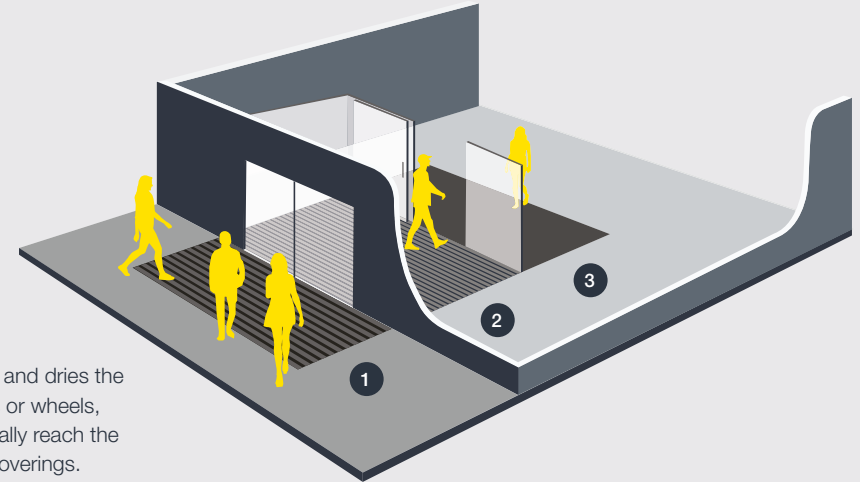
### Zone 2

Zone 2 is usually the location of the main entrance mat section. Often set in a recessed matwell, it is designed to capture dirt and moisture for removal later on.



### Zone 3

Zone 3 cleans and dries the soles of shoes or wheels, before they finally reach the internal floor coverings.



#### Light

Less than 80 people per hour 3-4 metres



#### Medium

Up to 300 people per hour 6-7 metres



#### High

Around 600 people per hour 8-10 metres



#### Very High

Over 5,000 people per day 9-12 metres



#### Light

Suitcases, Wheelchairs



#### Medium

Supermarket Trolleys, Sack barrows, Luggage trolleys



#### Heavy Duty

Supermarket Cages, Pallet Trucks



#### Max Duty

Forklift Trucks, Hydraulic Cranes



#### Most Effective Against

Dirt/Soil



#### Most Effective Against

Moisture

## Pedestrian Traffic

It is important that matting is a sufficient length to allow moisture and debris to be wiped off footwear as people walk across the mat. Our COBA Flooring team recommends a minimum of six footsteps for this to be effective.

## Wheeled Traffic

Depending on the nature of the building, the entrance may have to contend with different types of wheeled traffic. It is important that all matting complies with DDA Regulations/The Equality Act, so that wheelchairs can safely move on and off.

## Contaminants

All of our products protect you against contaminants but some products are more effective than others for removing either dirt or moisture. Use these icons to determine which.



## Key Factors

As well as performance, Entrance Matting should match your interior design and be able to be simply integrated into your overall building architecture. That's why we offer BIM level 2 objects for many of our products helping you to specify the right product first time. We also offer a wide variety of customisable elements, from profile height, to inserts and colours, we'll work with you to create a high performance, sophisticated entrance solution.



1 Year  
Warranty



3 Year  
Warranty



5 Year  
Warranty



10 Year  
Warranty



EasyInstall™  
Product

### Warranty

Our Entrance Matting ranges all carry limited warranties. All warranties we offer cover improper material or workmanship placed under normal conditions. Please note that some warranties apply only to specific parts of a product.

## Site Surveys & Samples

We're a customer-focused business providing a high quality, efficient and reliable service from the time of enquiry, to after sales support. Our trained sales staff operating out of COBA offices throughout Europe, provide our customers – whether distributors or end users – with local support and knowledge. We also offer free samples and site surveys ensuring you pick the right product, first time.

### EasyInstall™

Our range of simple to install, off-the-shelf modular systems, ideal for last minute jobs.



# Entrance Matting Product Selector

Product	Page	Warranty	Zone			Contaminant		Pedestrian Traffic				Wheeled Traffic				
			Years	External	Intermediate	Internal	Moisture	Dirt	Low	Medium	High	Very High	Light	Medium	Heavy	Max Duty
Plan.a	6	10		✓			✓	✓	✓	✓	✓	✓	✓	✓	✓	✓
Plan.b	8	5	✓	✓				✓	✓	✓	✓	✓	✓	✓	✓	✓
Plan.c	9	10	✓	✓				✓	✓	✓		✓	✓	✓		
Plan.e	10	5		✓			✓	✓	✓	✓	✓	✓	✓	✓	✓	✓
Premier Track	12	5	✓	✓			✓	✓	✓	✓		✓	✓	✓		
Premier Plus	13	5		✓			✓	✓	✓	✓	✓	✓	✓	✓	✓	✓
Premier Rib	14	5		✓			✓	✓	✓	✓		✓	✓	✓		
Precision Nib	18	1		✓				✓	✓	✓	✓	✓	✓	✓	✓	
Precision Loop	19	1					✓	✓	✓	✓		✓	✓			
Alba	20	3					✓	✓	✓	✓		✓	✓			
Needlepunch	21	1					✓	✓	✓	✓		✓	✓			
Toughrib Diagonal	22	1					✓	✓	✓			✓	✓			
Toughrib Contract	23	1		✓			✓	✓	✓			✓	✓			

## Entrance Matting Specification CPD

Want to learn more about Entrance Matting? Why not take our free CPD? We uncover some of the lesser-known considerations that every specifier should be thinking of when selecting a matting solution for their next project.

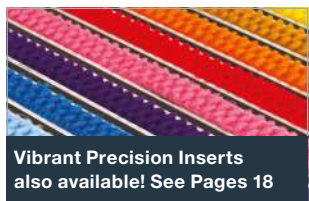
Available on our website or we can visit your offices to deliver the training in person. Email [contact@cobaflooring.com](mailto:contact@cobaflooring.com) for more info.



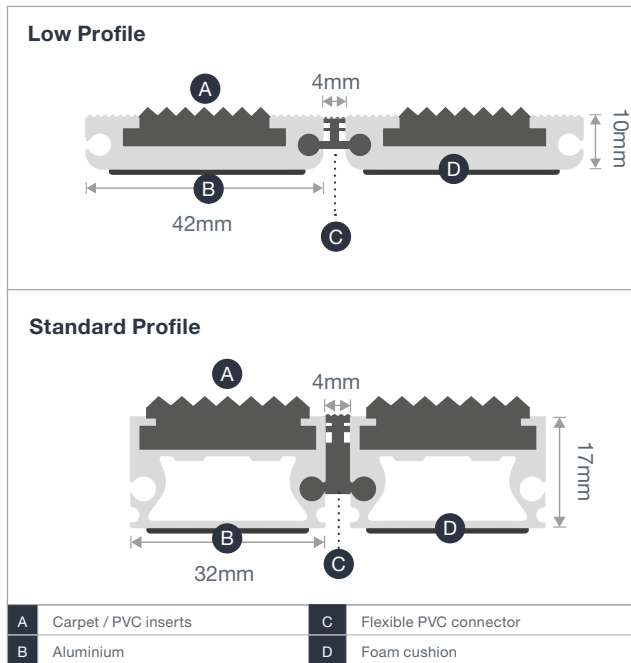
# Plan.a

Protect against dirt and moisture with a high-quality and stylish entrance matting system

Robust, high-quality aluminium system for heavy-duty use designed to cope with high footfall. • Flexible, yet durable PVC linking joints for ease of handling and easy fitting. • Custom-made to order to your specification. • Choose from one, or a combination of different surface options. • Also now available with vibrant coloured needlepunch or needlefelt polypropylene carpet inserts as used our Logomat Precision Nib products. • Logomats can be incorporated into any Plan.a design. • Product Height: 10 mm or 17 mm



Vibrant Precision Inserts also available! See Pages 18



## Insert Options



Alba



Black Brushes



Open



Needlepunch



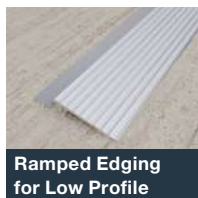
Multi-directional rubber



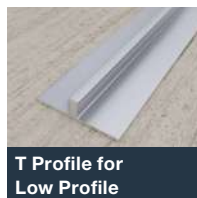
Closed



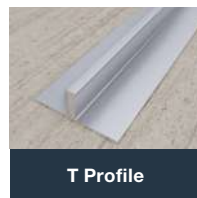
Precision Logomats can now be used as inserts within the aluminium rails of Plan.a, allowing you to brand your entire entrance matting system! See page 18 for more info.



Ramped Edging for Low Profile



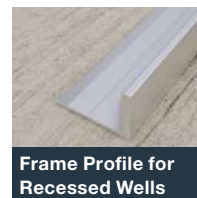
T Profile for Low Profile



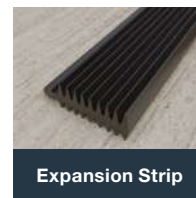
T Profile



Low Profile Frame for Recessed Wells



Frame Profile for Recessed Wells



Expansion Strip



## The Project

The Bridgewater Hall, officially opened in 1996, is Manchester's internationally acclaimed concert venue which hosts over 250 musical performances a year, spanning a wide range of musical genres. New entrance matting was required for The Public Main Entrance, The Box Office Entrance and The Artists' Entrance.

COBA Flooring was recommended by The Bridgewater Hall's janitorial supplier to provide the solution. Plan.a was selected and custom-made to order for the three recessed matwells, and subsequently installed by COBA.

One of the main challenges of the installation was the tight timescales – the matting had to be installed swiftly to ensure completion before the evening performance.

The installation involved removing the old matting and carrying out some sub-floor preparation to ensure the surface area was level.

Plan.a with Alba (nylon) carpet and PVC scrapers was then installed in each area. The Bridgewater Hall opted for a closed construction surface design.



## The Client's Reaction

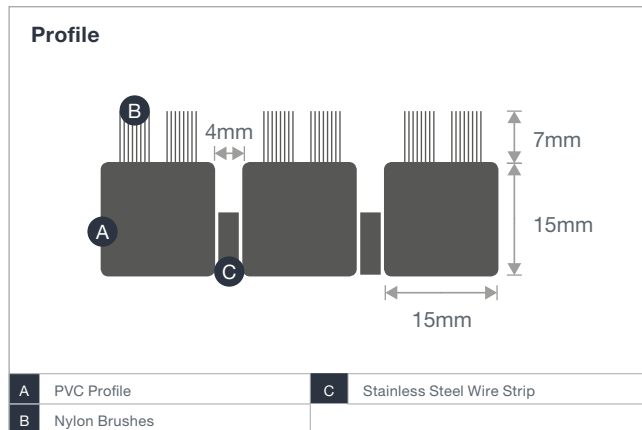
*"COBA only had a very restricted time to fit the entrance matting in three different locations, so the pressure was immense but still COBA's team managed to deliver on time and with great precision. They were a very good team, professional, conscientious, attentive and reactive to our business needs," says Armelle Rainjonneau, House Manager – The Bridgewater Hall. She added: "I have no issues in recommending COBA to other organisations. We experienced good all-round service and we are very pleased with the finished result."*

# Plan.b

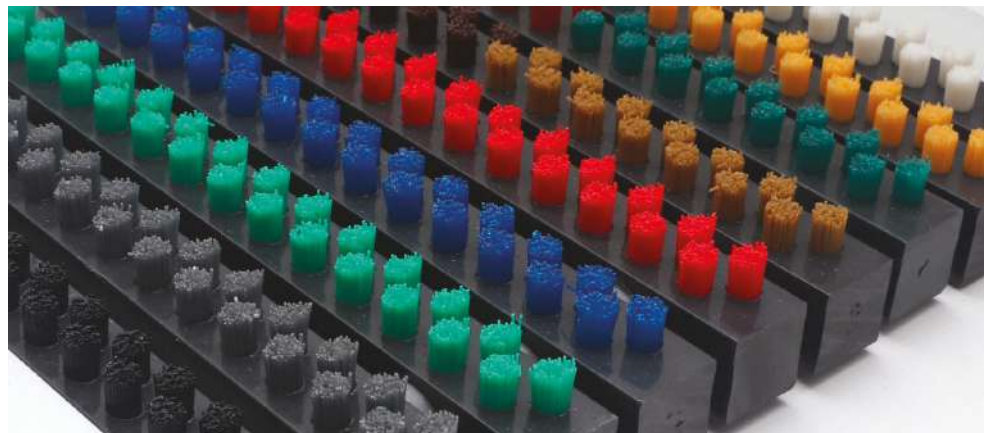
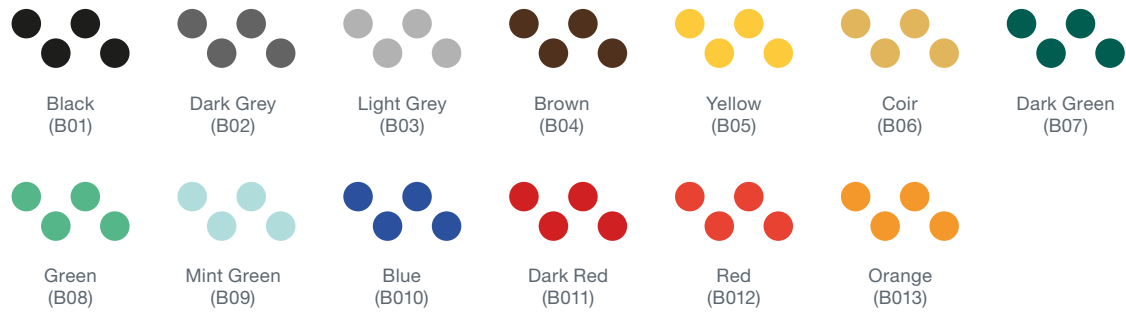
Protect against dirt and moisture with a high-quality and stylish entrance matting system

Brushes remove soil, grit and debris by 'brushing' the contour of shoes, providing optimum cleaning

- Strips are linked via flexible, stainless steel wires for ease of installation.
- Flexibility to install in recessed matwells or lay to surface with optional edging.
- Suitable for indoor and outdoor use.
- Custom-made to order with a choice of 13 colour-ways and bespoke logo options.
- Flexibility with design to include curves, diagonals and angles.
- Product Height: 22 mm



## Colours



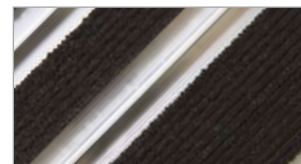
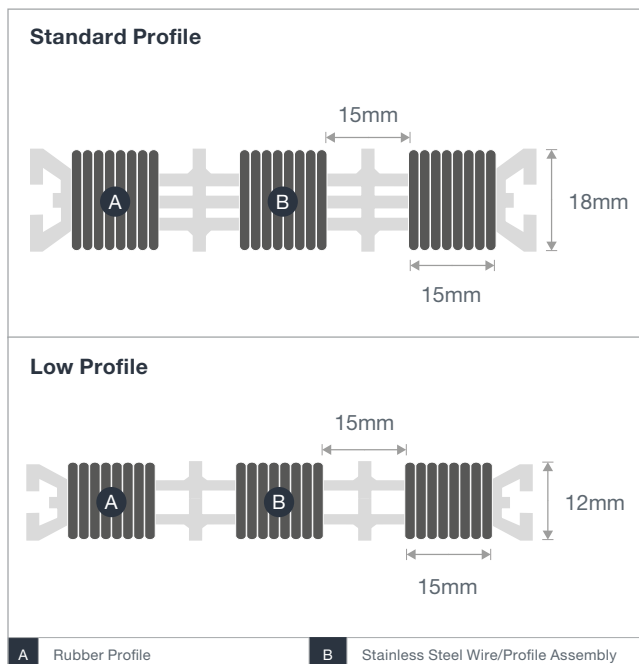


## Plan.c

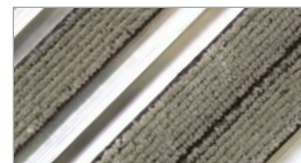
Protect against dirt and moisture with a robust aluminium system for high traffic entrances

Assembled in modules for easier transportation and installation.

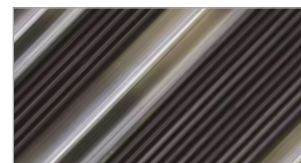
- Profiles are connected via heavy-duty steel wire for added durability.
- Reversible closed surface aluminium entrance matting.
- Suitable for indoor use.
- Two surface options: Rubber profiles with nylon filaments / Rubber scraper profiles.
- Custom-made to order.
- Product Height: 18 mm



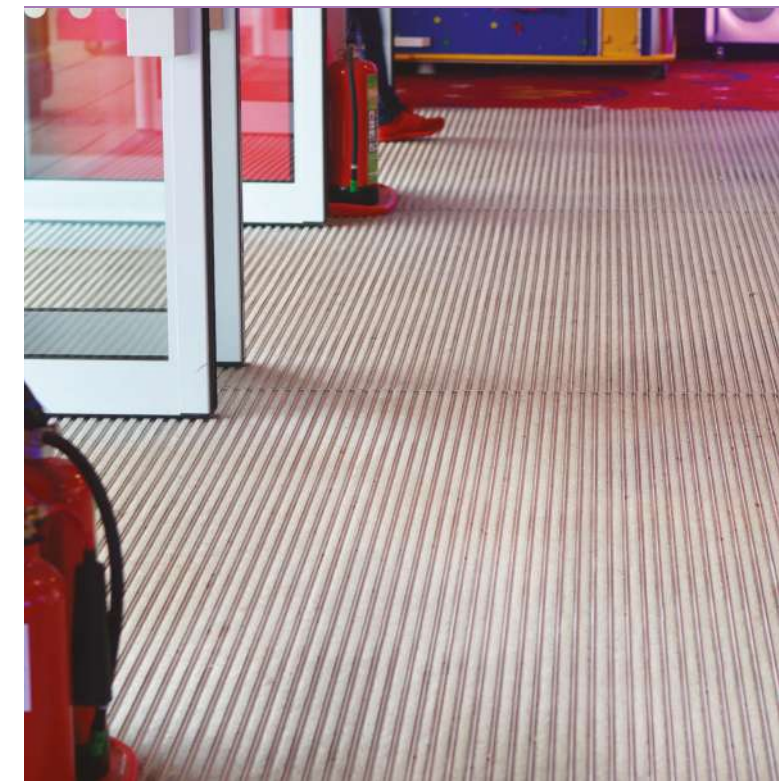
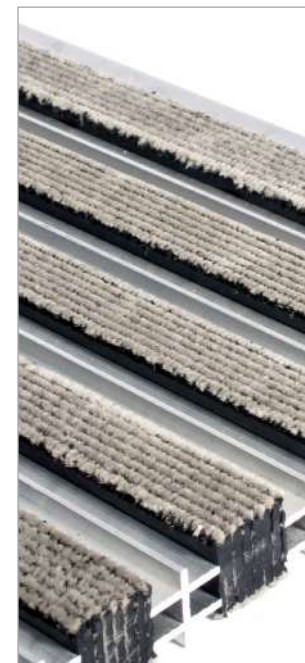
Black Rubber Fibre



Beige Rubber Fibre



Black Rubber Scraper

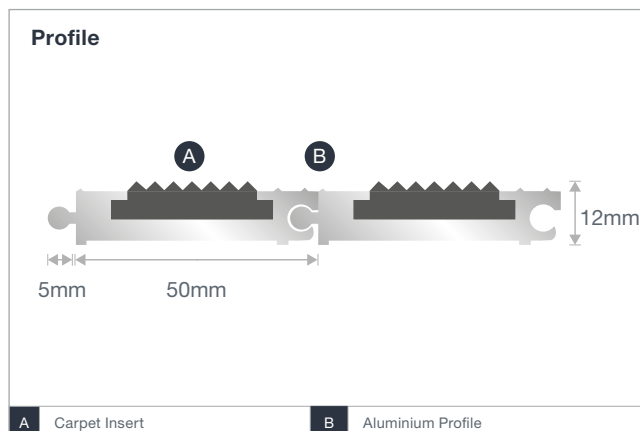




## Plan.e

### Robust aluminium entrance matting with low profile

- Durable linking joints for ease of handling/fitting.
- Suitable for high volume footfall in commercial locations.
- Available with most standard carpet insert options.
- Custom-made to order.
- Product Height: 12 mm



Alba Inserts



Needlepoint Inserts





## Project

### The Anchorage, Salford Quays

Client: Ardmac  
Products: Plan.a 17mm Closed Construction Brush and  
Needlepunch Alternating Inserts  
Area: 109m<sup>2</sup>





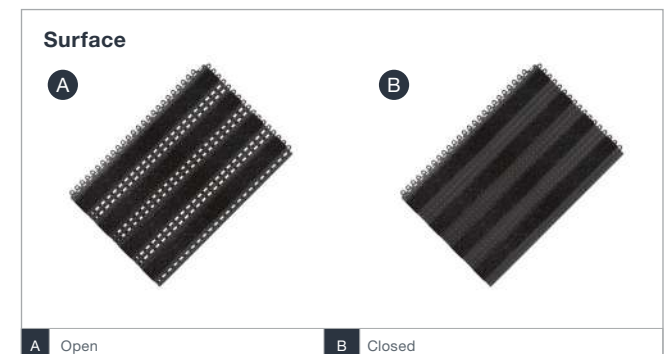
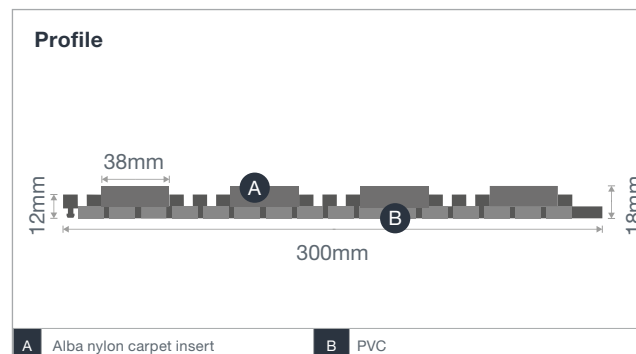
# Premier Track

**Protect internal flooring with heavy-duty, premium quality entrance tiles**

Effectively removes moisture and debris, even from wheeled trolleys, without buckling. • Safe for high heeled footwear, heels won't get stuck in the tiles. • Move, clean or replace individual tiles - they clip together with ease. • Easily cut to shape, so you can fit to any space and install faster with fewer specialist tools. • Exceptionally durable carpet inserts manufactured from ECONYL®, a recycled nylon material made from discarded fishing nets and other sources. • Ideal for recessed entrance wells. • Fire tested to BS EN 13501-1 and slip tested to BS 7676-2. • Product Height: 16 mm



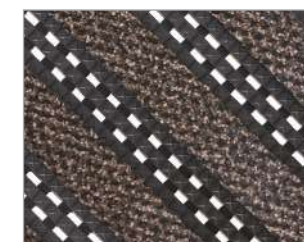
Sizes	Surface	Anthracite	Blue	Brown	Grey
30cm x 45cm	Open	PT010101	PT010201	PT010501	PT010601
30cm x 45cm	Closed	PT010101C	PT010201C	PT010501C	PT010601C



Anthracite



Blue



Brown



Grey

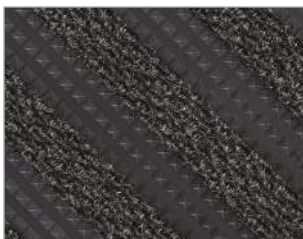
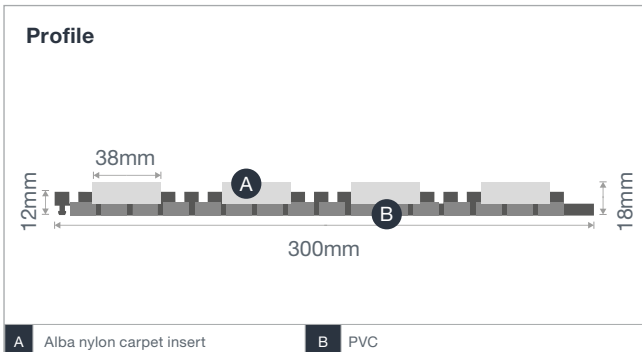
# Premier Plus

**Interlocking carpet entrance tiles to keep internal floor coverings clean and slip free**

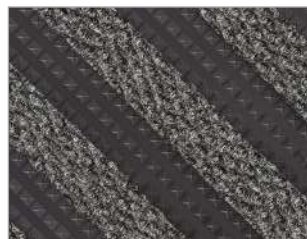
Quality needlepunch carpet inserts available in two colours, which effectively scrape dirt and wipe moisture. • Tiles simply clip together on site for ease of transportation and installation. • Move, clean or replace individual tiles - they clip together with ease. • Tiles offer flexibility in the size and shape which can be covered. • Easily cut to shape, so you can fit to any space and install faster with fewer specialist tools. • Fire tested to BS EN 13501-1 and slip tested to BS 7676-2. • Product Height: 18 mm



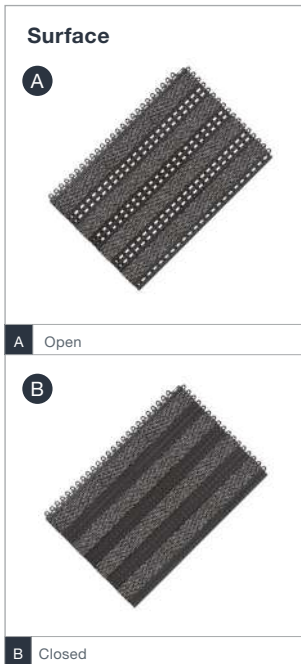
Sizes	Surface	Charcoal	Grey
30cm x 45cm	Open	PMP010101	PMP010601
30cm x 45cm	Closed	PMP010101C	PMP010601C



Charcoal



Grey





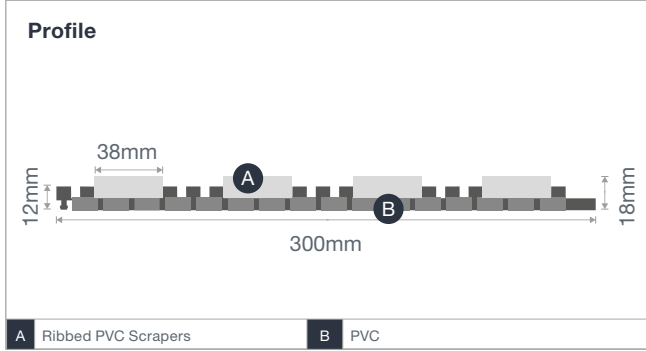
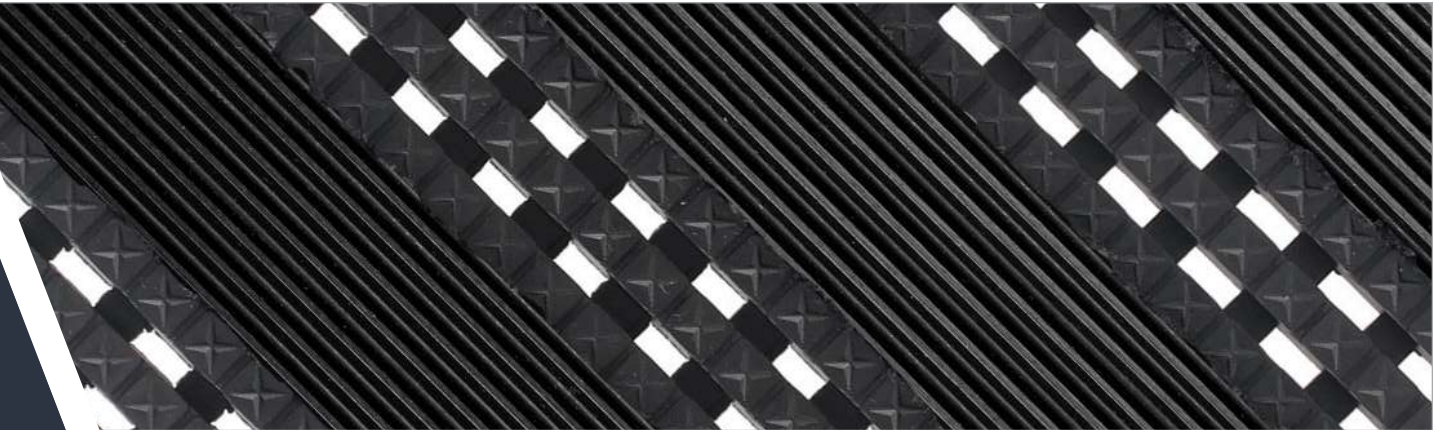
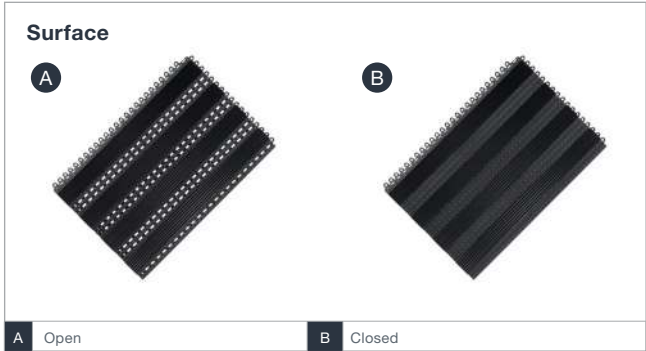
# Premier Rib

**Hardwearing anti-slip scraper for the perfect entrance matting system**

Perfect for use at the point of entry for high footfall entrance matting systems. • Excellent in combination with other Premier tiles in order to remove moisture and debris from footwear. • Tested for trolley use • Ribbed rubber inserts ensure reduced risk of slipping. • Easy to install, clean and maintain • Product Height: 12 mm



Sizes	Surface	Black
30cm x 45cm	Open	PR010101
30cm x 45cm	Closed	PR010101C





## Stress Free Installation

### Installation

Specifying the right entrance matting for your building is one thing but installation of some of the most popular systems such as aluminium matting is also a specialist job. That's why we offer a complete supply and install service.

Our trusted team have years of experience working with COBA products, and know them inside out. We can even install your project overnight to prevent any business downtime. Once we've installed your project we'll clear up and dispose of any rubbish, leaving you to admire your new flooring installation!

## Just In Time Entrance Matting

### Supply

With distribution centres across Europe we're proud to be able to offer next day delivery on many of our products, perfect for those last minute jobs!

Our **EasyInstall™** range of entrance matting has been developed with this in mind. Off the shelf, modular systems, they are quick to order and install. If you've got more time to spare, why not get in touch with our team for free samples, site surveys and support!

## EasyInstall™



Measure



Order



Unbox



Install



# Logomat

## Make an instant impact at the point of entry

Customised door mat printed with your individual logos or messages.

- Choose from up to 66 colours (maximum of 6 per logo mat).
- Whilst also making a statement, Logomat is a real performer in trapping dirt and moisture.
- Keeps your entrance clean while also conveying your brand.
- Comes with an 11-year warranty against fading, ensuring your personalised logos and messages look great.
- Easy to clean, with standard sizes machine washable.
- Anti-slip backing to keep the mat in place.
- Product Height: 11 mm



Printed or Precision cut logomats can be incorporated into any of our Entrance Matting range.



# Promomat

## Outstanding promotional floor mat in your design

Printed digitally for superb colour reproduction and definition.

- All round brand experience at events by adding graphics on the floor.
- Ideal when large numbers of mats are needed.
- Don't let your product go unnoticed – the high quality colour reproduction is ideal for enhancing point of sale experiences.
- Extend your corporate identity through the whole building for seamless branding.
- A great gift for clients and prospects.
- Cost effective addition to any range of promotional items – has been used to promote films, events and product launches.
- Product Height: 6 mm



Because Promomat is printed digitally, virtually any design and colour can be reproduced - giving you full creative control.

## Logomat Precision

Premium inlay logomats manufactured from our Precision carpet

Custom quality Logomats • Solution dyed polypropylene fibres for unbeatable resistance to wear, UV and staining. • Choose from 2 material types; Precision Loop or Precision Nib (see page 26 & 27 for spec) and 33 vibrant colours to recreate your logo • Low installation cost. • Needlefelt/punch construction provides good crush resistance. • Logomats can be incorporated into any of our ranges. • Logomats can now be used as the carpet inserts within our Plan.a entrance matting systems. • Manufactured in the UK.



Precision Logomats can now be used as inserts within our Plan.a aluminium system, allowing you to effectively brand your entire entrance matting system!



# Precision Nib

## High quality print logo mats in your design

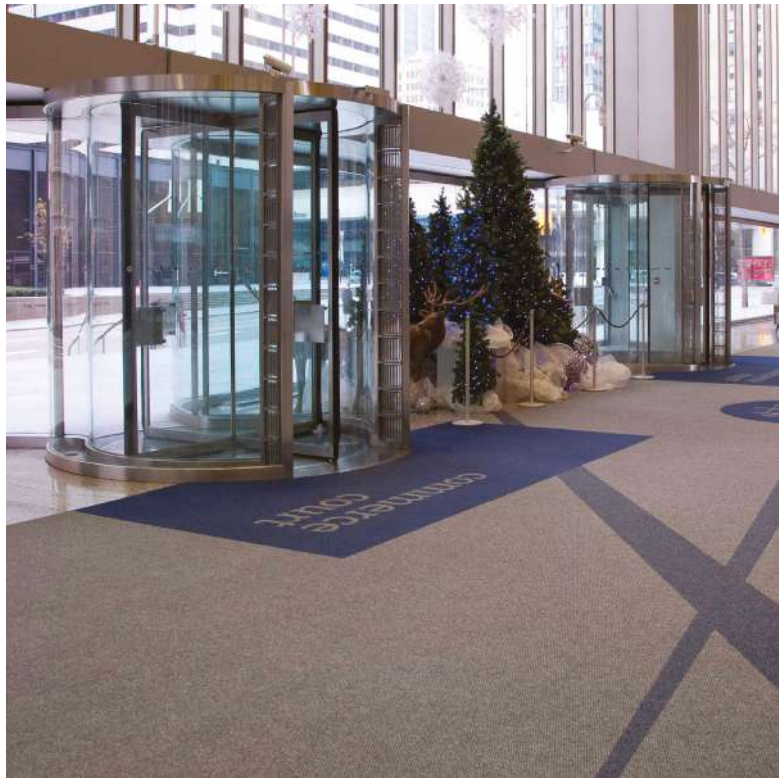
High quality rugged matting material available in stunning colourways.

- Hardwearing, UV and stain resistant.
- Ideal for use in logomat designs – choose from the 18 colours to recreate your design.
- Heavy weight pile and large nib design provides outstanding scrubbing action.
- Needlepunch construction provides optimal crush resistance.
- Edges will not unravel or fray.
- Logomats made in Britain.
- Product Height: 11 mm +15% / -10%



Size	Black	Charcoal	Grey	Wine Red	Red
2 m x 23 m	SC010001	SC110001	SC060001	SC320001	SC310001
Size	Light Beige	Golden Beige	Orange	Dark Brown	Dark Green
2 m x 23 m	SC210001	SC220001	SC170001	SC050001	SC040001

Size	Apple Green	Navy Blue	Sky Blue	Baby Blue	Yellow
2 m x 23 m	SC420001	SC180001	SC020001	SC430001	SC070001
Size	Purple	Pink	White		
2 m x 23 m	SC200007	SC260001	SC130001		



# Precision Loop

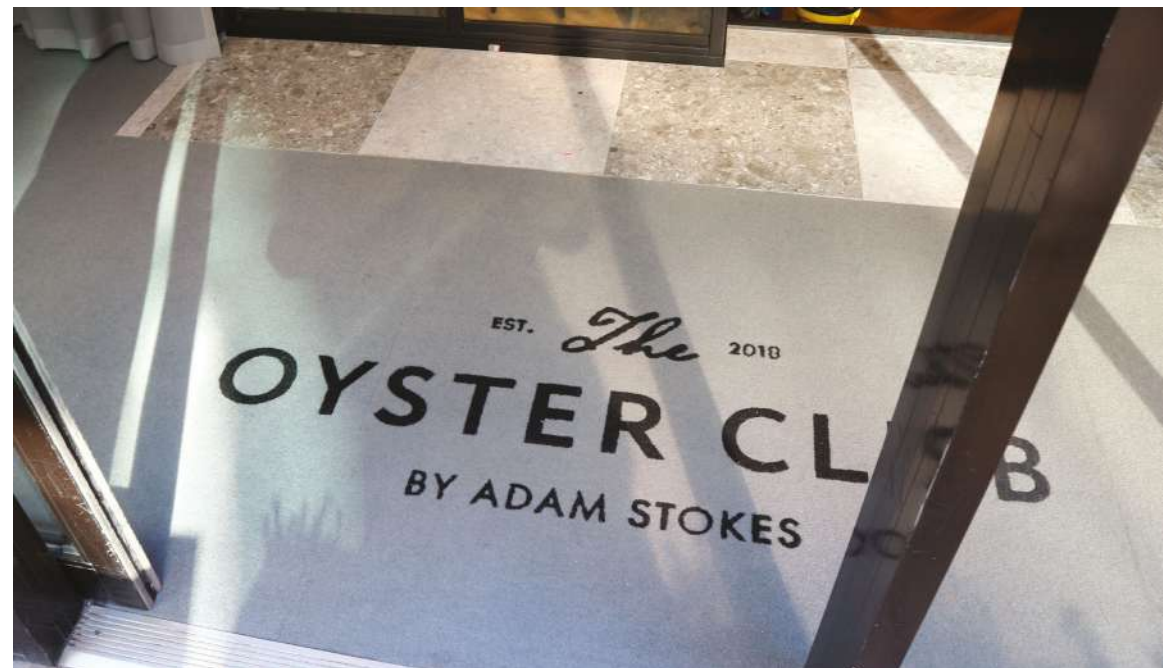
## Popular inlay logomats

Perfect material to produce inlay logomats with a smooth surface.

- Durable entrance carpet, UV and stain resistant.
- Ideal for use in logomat designs
- Choose from 15 colours to recreate your design.
- Heavy weight pile provides outstanding absorbing and wiping action.
- Needlefelt construction provides good crush resistance.
- Edges will not unravel or fray.
- Logomats made in Britain.
- Product Height: 12.5 mm +15% / -10%



Size	Black	Dark Grey	Charcoal	Light Grey	Wine Red
2 m x 23 m	PL010001	PL160001	PL110001	PL060001	PL320001
Size	Red	Light Brown	Orange	Dark Brown	Dark Green
2 m x 23 m	PL030001	PL190001	PL170001	PL050001	PL040001
Size	Apple Green	Blue	Sky Blue	Yellow	White
2 m x 23 m	PL420001	PL180001	PL020001	PL070001	PL100001



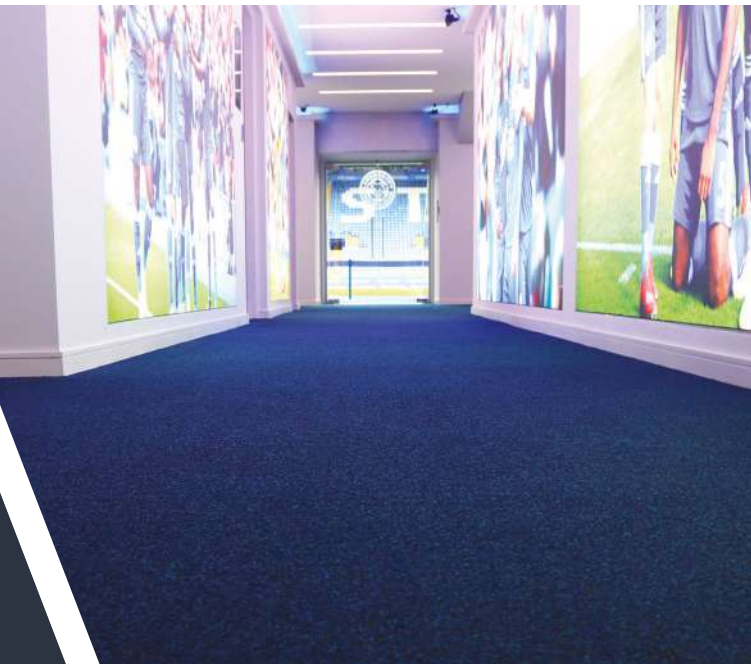
# Alba

## Absorbent carpet entrance matting to protect interior floor surfaces

Adaptable carpet entrance matting for high volume entrance areas, walkways and corridors. • Nylon pile is highly absorbent and also withstands crushing. • Suitable for glue down, wall to wall, or floor surface applications. • Available with optional edging depending on the requirements of the application. • Can be used as part of a two-step system in heavy traffic environments. • Exceptionally durable carpet made from ECONYL®, a recycled nylon material made from discarded fishing nets and other sources. • Product Height: 7.5 mm +15% / -10%



Sizes	Anthracite	Blue	Brown	Grey
2 m x per linear metre	AB010008C	AB020008C	AB050008C	AB060008C



Anthracite



Blue



Brown



Grey



## Needlepunch

### Versatile dirt scraper carpet available in long runs

Textured polypropylene fibres provide outstanding scraper action to remove dirt and moisture. • Adaptable carpet matting for interior walkways and reception areas providing a total dirt-barrier solution. • Suitable for use in recessed matwells in entrance areas. • Available with optional edging to prevent tripping. • Suitable for glue down, wall to wall, or lay to surface applications. • Product Height: 10.8 mm +15% / -10%



Sizes	Charcoal	Grey
2 m x per linear metre (max 21 m)	NP010001C	NP060001C
2 m x 21 m	NP010001	NP060001



Charcoal



Grey



# Toughrib Diagonal

**Ribbed carpet entrance matting designed to rigorously scrape debris and moisture**

Premium quality, heavy-duty entrance matting featuring attractive diagonal ribbed design for optimum scraping. • 100% solution dyed UV stabilised polypropylene fibres for rigorous scraping performance. • Features a robust duo rubber backing to prevent movement. • Supplied in rolls of up to 25 m or in cut linear metre lengths. • Product Height: 8.2 mm +15% / -10%



Sizes	Charcoal	Dark Blue	Grey
2 m x 25 m roll	TRD010001	TRD020001	TRD060001
2 m x per linear metre	TRD010001C	TRD020001C	TRD060001C



Dark Blue



Charcoal



Grey

# Toughrib Contract

**Ribbed entrance matting on a roll designed to scrape dirt and wipe moisture**

A popular choice for flooring contractors requiring versatile rolls of entrance carpet. • Debris and moisture are captured in the ridges and can be vacuumed for easy maintenance. • Adaptable carpet entrance matting that can be used in recessed matwells or on pedestrian walkways. • 100% polypropylene pile is durable and suitable for heavy-duty use. • Product Height: 6.5 mm +15% / -10%



Sizes	Charcoal	Blue	Brown	Grey
2 m x 30 m roll	TR010006	TR020006	TR050006	TR060006
2 m x per linear metre	TR010006C	TR020006C	TR050006C	TR060006C



Charcoal



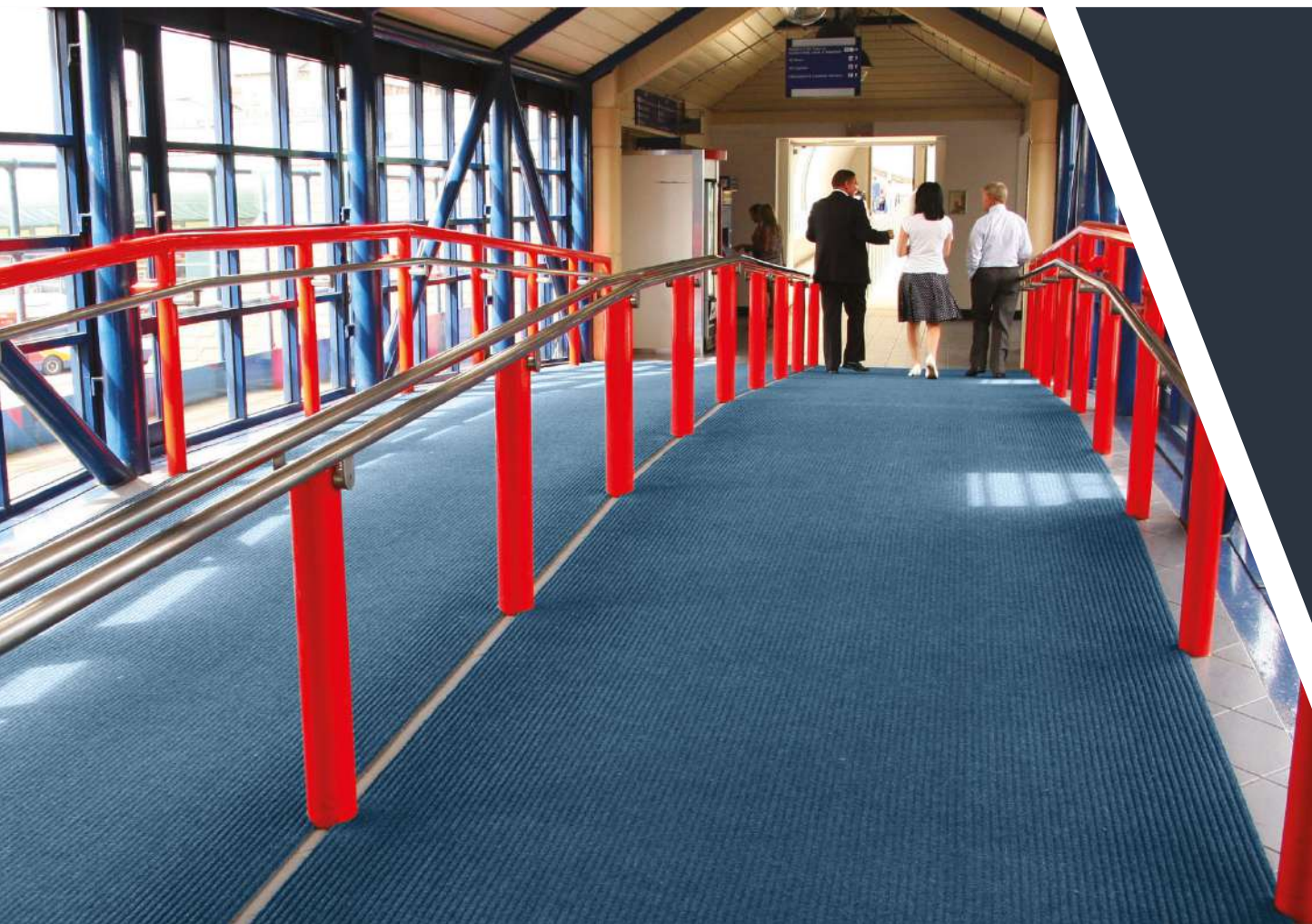
Blue



Brown



Grey

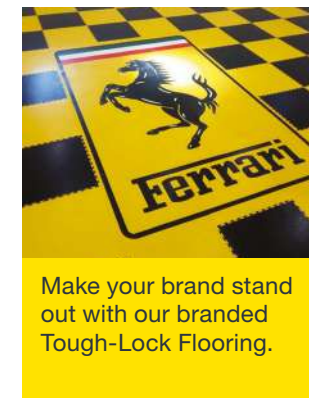




## Floor Coverings

### External and internal floorcoverings

Our expansion into the flooring market has brought with it a choice of floor covering products for commercial and industrial environments. Our heavy-duty rubber and PVC flooring is ideal for demanding applications, such as warehouses, garages and showrooms.



Make your brand stand out with our branded Tough-Lock Flooring.



## COBAGRiP® Range

### Floor safety, whatever the weather!

COBAGRiP® is a range of UV stabilised GRP sheets, treads and stair nosing designed to offer exceptional levels of slip-resistance both indoors and out, while having outstanding wear and tear qualities. It is an ideal underfoot safety solution for pedestrian and factory walkways, access ramps, gangways and bridges.

The Silicone Carbide 'gritted' top surface provides effective underfoot grip and is resistant to most solvents and chemicals. It is manufactured using flame retardant materials. Easy to install, simply bond or screw to the existing floor surface, COBAGRiP® is a cost-effective means of refurbishing damaged or slippery floors. Easy to clean (pressure wash).

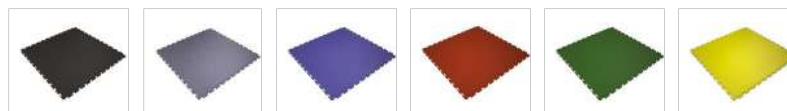
**See the full COBAGRiP® range on pages 27-31.**

*\*Ramp Slip Tested to R13 in accordance with DIN 51130: 2010.  
Pendulum Slip Tested in accordance with BS 7976-2: 2002.*

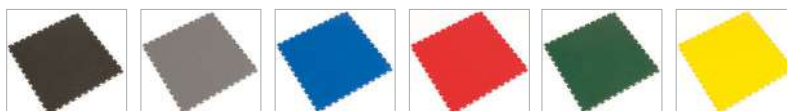
# Tough-Lock

Easy to install Interlocking PVC tiles, perfect for a quick solution to damaged floors

The resilient PVC material is suitable for both heavy and light industrial use, including withstanding the weight of most forklift trucks. • Tiles are easy to install, with a simple interlocking system. • Bevelled edging is available in a range of colours to add that finishing touch. • Available as a studded or textured tile. • Product Height: 5 mm or 7 mm



Studded Tile	Black	Grey	Blue	Red	Green	Yellow
0.5 m x 0.5 m x 7 mm	TLS010007B	TLS060007DG	TLS020007BE	TLS030007R	TLS040007GN	TLS070007Y



Textured Tile	Black	Grey	Blue	Red	Green	Yellow
0.5 m x 0.5 m x 5 mm	TLT010005B	TLT060005DG	TLT020005BE	TLT030005R	TLT040005GN	-
0.5 m x 0.5 m x 7 mm	TLT010007B	TLT060007DG	TLT020007BE	TLT030007R	TLT060007DG	TLT070007Y



Add impact to your **Tough-Lock** floor by incorporating permanent floor markings.

We can incorporate almost any logo or image into your **Tough-Lock** floor to create a permanent and highly visual sign or message. The logo tiles are manufactured by CNC water laser jet cutting which ensures a clean and precise cut.

Available in black, light grey, dark grey, graphite, black, red, green, yellow, dark blue and white. (Special colours subject to availability).



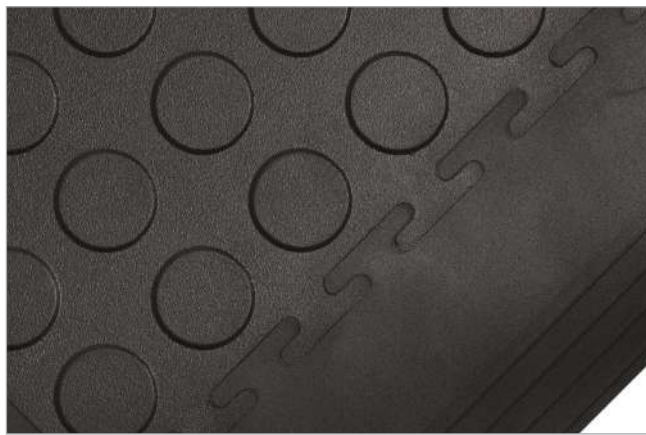


# Tough-Lock Eco

**Interlocking floor covering made from 100% recycled resilient PVC**

100% recycled PVC version of Tough-Lock. • Available as a studded or textured tile. • Recycled PVC material PVC material is suitable for both heavy and light industrial use. • Tiles are easy to install, with a simple interlocking system. • Bevelled edging is available to add that finishing touch. • Product Height: 5 mm

Tile Size (pack of 4)	Black
500 mm x 500 mm	TLS010001E
Tough-Lock Eco 5mm Black Edge/Corner (Pack of 4)	TLC010001E
Tough-Lock Eco 5mm Black Edge (Pack of 4)	TLE010001E



## COBAGRIP® Stair Tread

**Increase stair safety with a non-slip silicon carbide surface finish**

Fully cover a stair area with an anti-slip surface. • Each stair tread covers the entire step area, overlapping the edge onto the riser acting as stair protectors. • Available in yellow or white, which both meet current Equality Act requirements. • The perfect match with our COBAGRIP Sheet. • Product Height: 5 mm

Sizes	Black/Yellow	Black/White
1 m x 345 mm x 55 mm	GRP010704S	GRP010134S
1.5 m x 345 mm x 55 mm	GRP010703S	GRP010133S
2 m x 345 mm x 55 mm	GRP010702S	GRP010132S
3 m x 345 mm x 55 mm	GRP010701S	GRP010131S

Oyster White



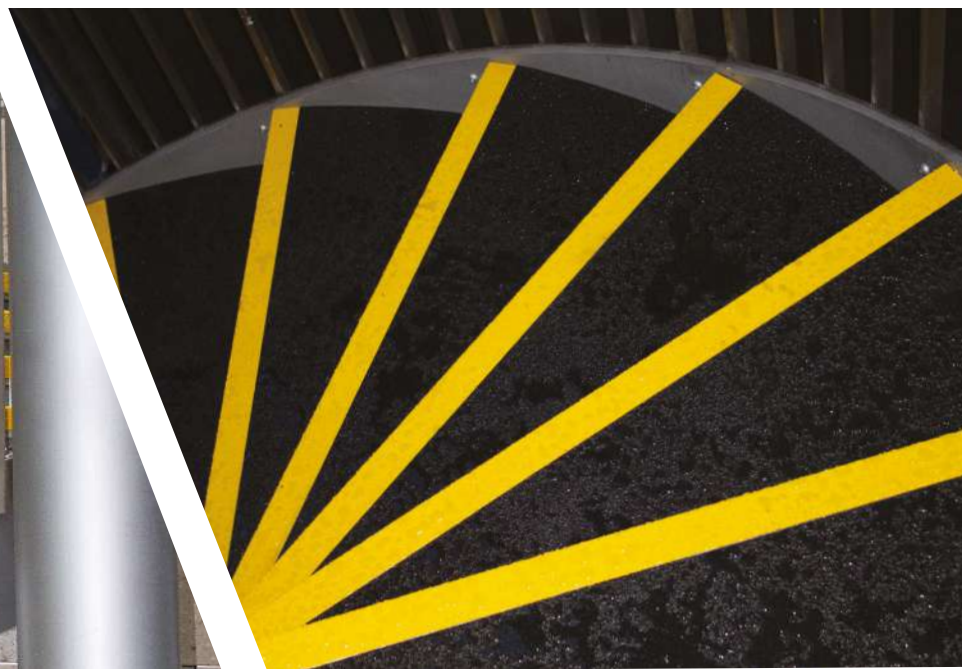
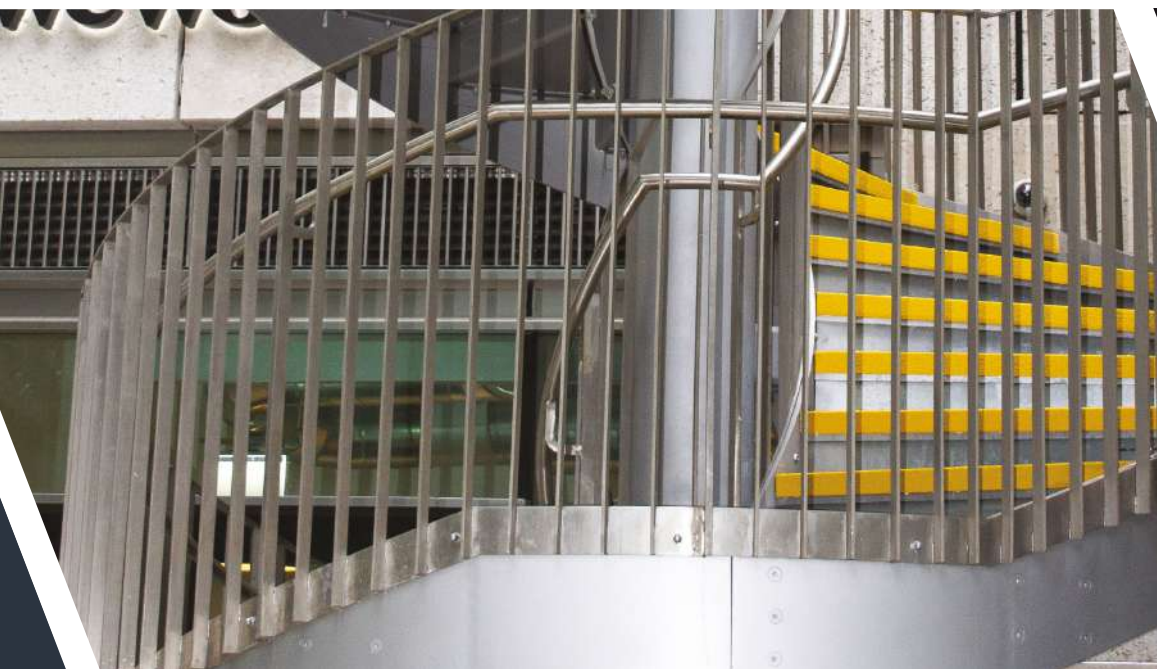


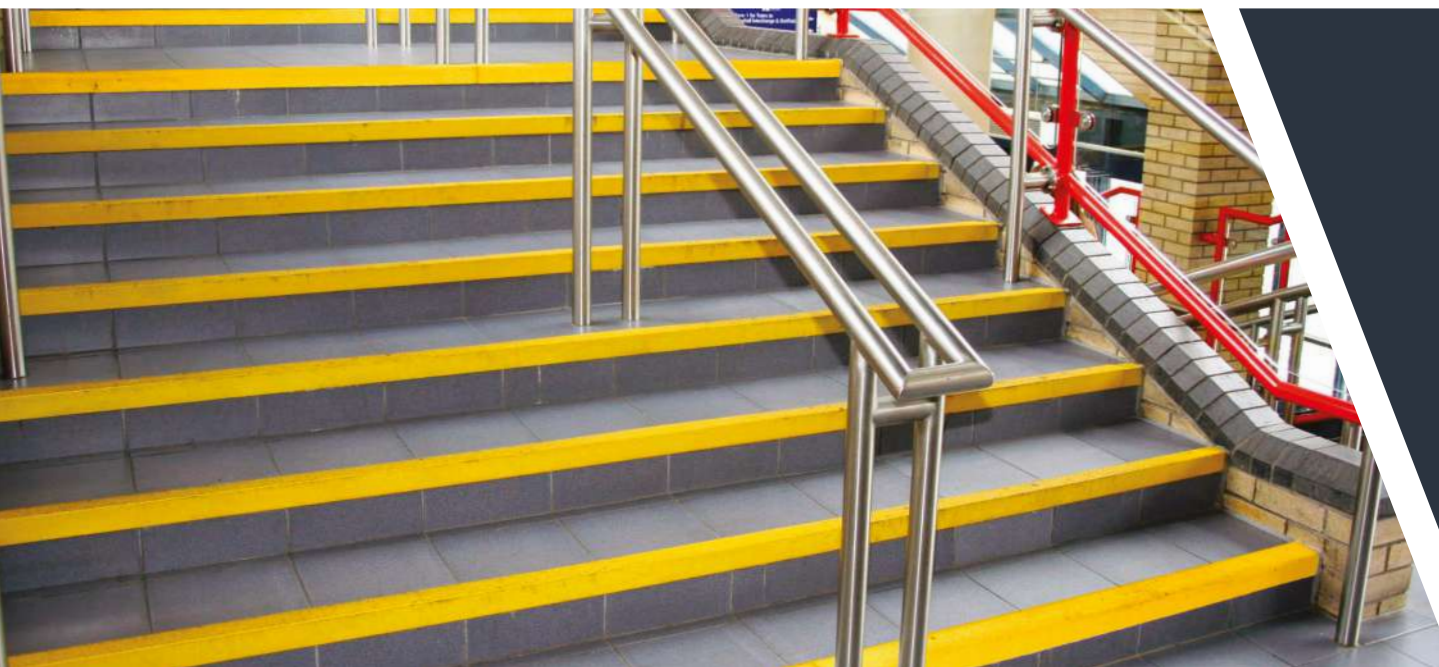
## Project

# Spiral Stairs, Bishopsgate

Client:	Rees Flooring
Contractor:	Multiplex Construction
Location:	15 Bishopsgate, London
Products:	GRP Nosings and GRP Sheets

COBA Flooring supplied and installed this particular project. This was a challenging install due to the spiral stair case, our installation team templated the area to ensure the best finish. We supplied 17 GRP Sheets and 30 Stair Nosings in total.





## COBAGRiP® Stair Nosing

**Increase stair safety with highly visible anti-slip stair nosing**

Durable and easy to install on both existing and new-build steps. • A hard wearing, gritty surface available in bright colours helps protect against slips and trips whilst meeting the Equality Act requirements (DDA). • Manufactured with chamfered back edge for additional safety. • Product Height: 5 mm

Size	Black	Yellow	Black/Yellow
3 m x 55 mm x 55 mm	GRP010001N	GRP070001N	GRP010701N
2 m x 55 mm x 55 mm	GRP010002N	GRP070002N	GRP010702N
1.5 m x 55 mm x 55 mm	GRP010003N	GRP070003N	GRP010703N
1 m x 55 mm x 55 mm	GRP010004N	GRP070004N	GRP010704N
0.75 m x 55 mm x 55 mm	GRP010005N	GRP070005N	GRP010705N

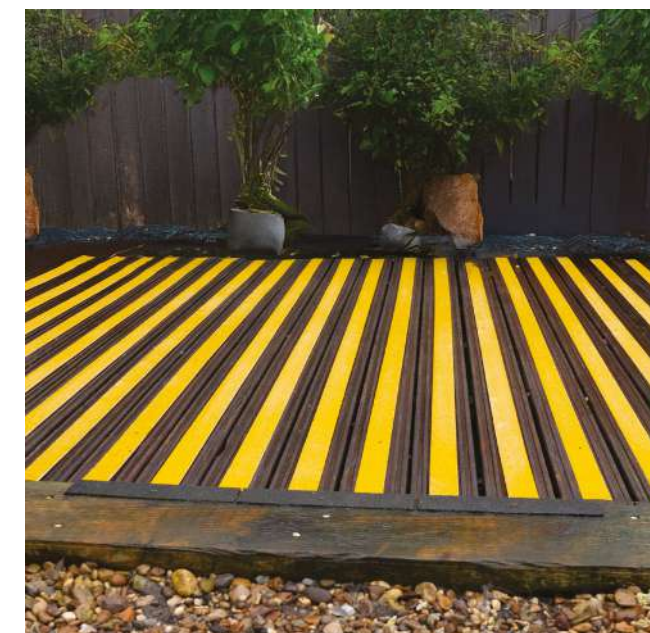
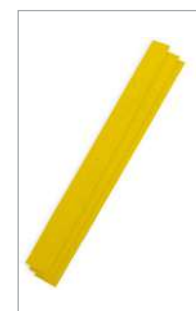


## COBAGRiP® Decking Strips

**Avoid slipping hazards on outdoor walkways**

- A fast and simple solution to provide slip resistance on decking and similar structures.
- Silicon carbide surface for high anti slip protection in both wet and dry conditions and the perfect solution to slippery decking during the winter months. • Suitable for indoor and outdoor use and easily applied to wooden, metal or concrete surfaces.
- Suitable for use on decking, walkways, bridges, steps, construction environments, schools and leisure facilities. • Simply bond or screw onto the existing floor surface.
- Made from 3 mm thick low profile sheet ensuring suitability with wheelchair traffic.
- Easy to cut to length. • Available in a range of colours which meet the Equality Act requirements, including black, grey and yellow. • Fire Tested to DIN 13501: Bfl – s1 (2018) & EN ISO 11925-2:2020 & EN ISO 9239-1:2010 (both 2021). • Slip Tested to DIN 51130 – R13 & BS 7976-2 – low slip potential. • Product Height: 5 mm

Sizes		Black	Grey	Yellow
2400 mm x 90 mm x 3 mm	Pack of 3	GRP012490	GRP062490	GRP072490
1200 mm x 90 mm x 3 mm	Pack of 3	GRP011290	GRP061290	GRP071290
2400 mm x 50 mm x 3 mm	Pack of 3	GRP012490	GRP062450	GRP072450
1200 mm x 50 mm x 3 mm	Pack of 3	GRP011290	GRP061250	GRP071250





## COBAGRiP® Sheet

**GRP flooring is the ideal solution to combat slip hazards such as liquids and ice**

An easy to install anti-slip solution for internal and external areas. • Simply bond or screw the GRP flooring onto the existing floor surface. • Available in a range of colours which meet the Equality Act requirements, including black, grey and yellow. • Product Height: 5 mm

Sizes	Black	Grey	Yellow
1.2 m x 2.4 m	GRP010001	GRP060001	GRP070001
1.2 m x 1.2 m	GRP010002	GRP060002	GRP070002
0.8 m x 1.2 m	GRP010003	GRP060003	GRP070003

## COBAGRiP® Light

**GRP flooring solution for use on undulating surfaces**

An easy to install anti-slip solution for internal and external areas. • Made from silicon carbide it's ideal for use on undulating surfaces including factory walkways, ramps and bridges. • Product Height: 2.4 mm

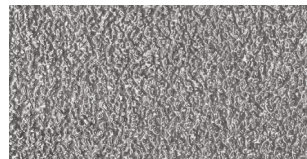
Sizes	Black	Grey	Yellow
1.2 m x 2.4 m	GRP010001L	GRP060001L	GRP070001L
1.2 m x 1.2 m	GRP010002L	GRP060002L	GRP070002L
0.8 m x 1.2 m	GRP010003L	GRP060003L	GRP070003L



**Colour options (Sheet & Light)**



Black



Grey

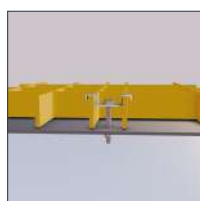


Yellow

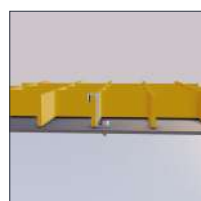
# COBAGRIP® Grating

## GRP grating for platforms, walkways, flooring, and covers

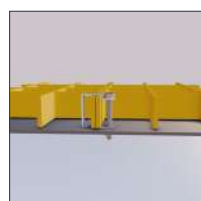
Made from tough, hard-wearing GRP with a grit surface for excellent slip resistance. • A high-quality flooring option that offers a credible alternative to steel mesh grating. • The quartz crystal-bonded top surface provides extreme durability and high slip resistance. • Perfect for high-traffic areas or demanding, corrosive environments. • Half the weight of steel solutions, making it easy to install with no ongoing maintenance. • M-type, C-type and L-type clip accessories available for secure installation on edges. • Manufactured from Type O, Orthophthalic Polyester resin, ensuring high performance and durability. • Strong bi-directional properties allow the product to be used in various applications, making it more versatile. • Slip test to EN 16165:2021 Annex B. • Fire tested to EN 13501-1:2018. • The paint pigment used in the product complies with ASTM E1645-01, ensuring the product is safe and reduces the risk of lead exposure to meet regulatory standards. • Product height: 25 mm, 38 mm and 50 mm.



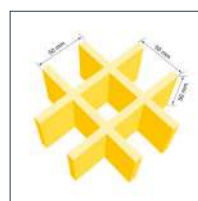
M-Type



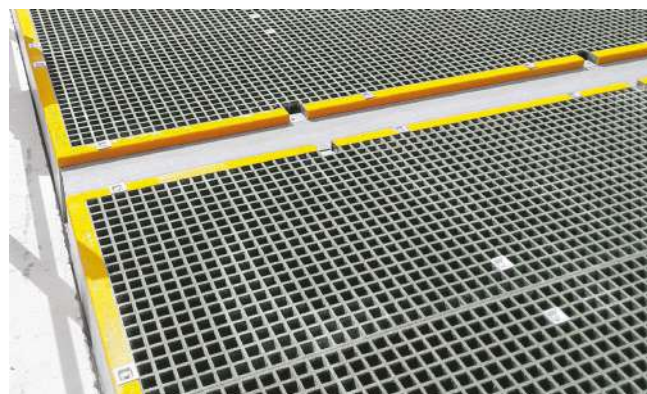
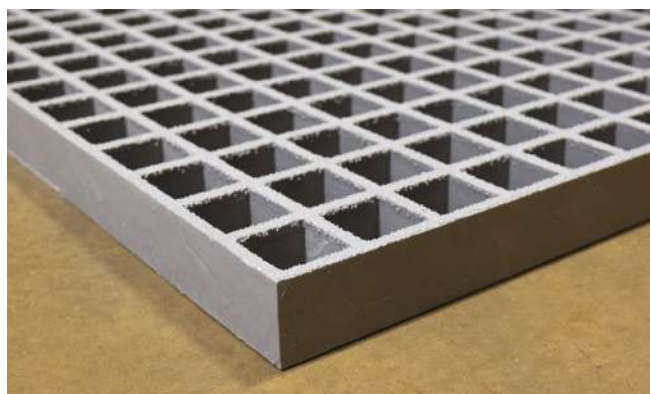
L-Type



C-Type



50 mm Thickness

25 mm & 38 mm  
Thickness

Size	Green	Grey	Yellow
2000mm x 1000mm x 25mm	GRP040001G	GRP060001G	GRP070001G
3000mm x 1000mm x 25mm	GRP040002G	GRP060002G	GRP070002G
3660mm x 1220mm x 25mm	GRP040003G	GRP060003G	GRP070003G
2000mm x 1000mm x 38mm	GRP040004G	GRP060004G	GRP070004G
3000mm x 1000mm x 38mm	GRP040005G	GRP060005G	GRP070005G
3660mm x 1220mm x 38mm	GRP040006G	GRP060006G	GRP070006G
2000mm x 1000mm x 50mm	GRP040007G	GRP060007G	GRP070007G
3000mm x 1000mm x 50mm	GRP040008G	GRP060008G	GRP070008G
3660mm x 1220mm x 50mm	GRP040009G	GRP060009G	GRP070009G

### Accessories

M CLIP GRP GRATING 25mm	MCLIP25
M CLIP GRP GRATING 38mm	MCLIP38
M CLIP GRP GRATING 50mm	MCLIP50
C CLIP GRP GRATING 25mm	CCLIP25
C CLIP GRP GRATING 38mm	CCLIP38
C CLIP GRP GRATING 50mm	CCLIP50
L CLIP GRP GRATING 25mm	LCLIP25
L CLIP GRP GRATING 38mm	LCLIP38
L CLIP GRP GRATING 50mm	LCLIP50



# Want to find out more?

Download our FREE Guides to Entrance Matting series.  
Visit [www.cobaflooring.com](http://www.cobaflooring.com)

## Get in Touch

Harrison Norton  
Email: [hnorton@coba.com](mailto:hnorton@coba.com)  
South Area Manager  
Mobile: 07971 136 068

 +44 (0)1788 228 566  
 [contact@cobaflooring.com](mailto:contact@cobaflooring.com)  
 [www.cobaflooring.com](http://www.cobaflooring.com)  
 @COBAFlooring  
 COBAFlooring

